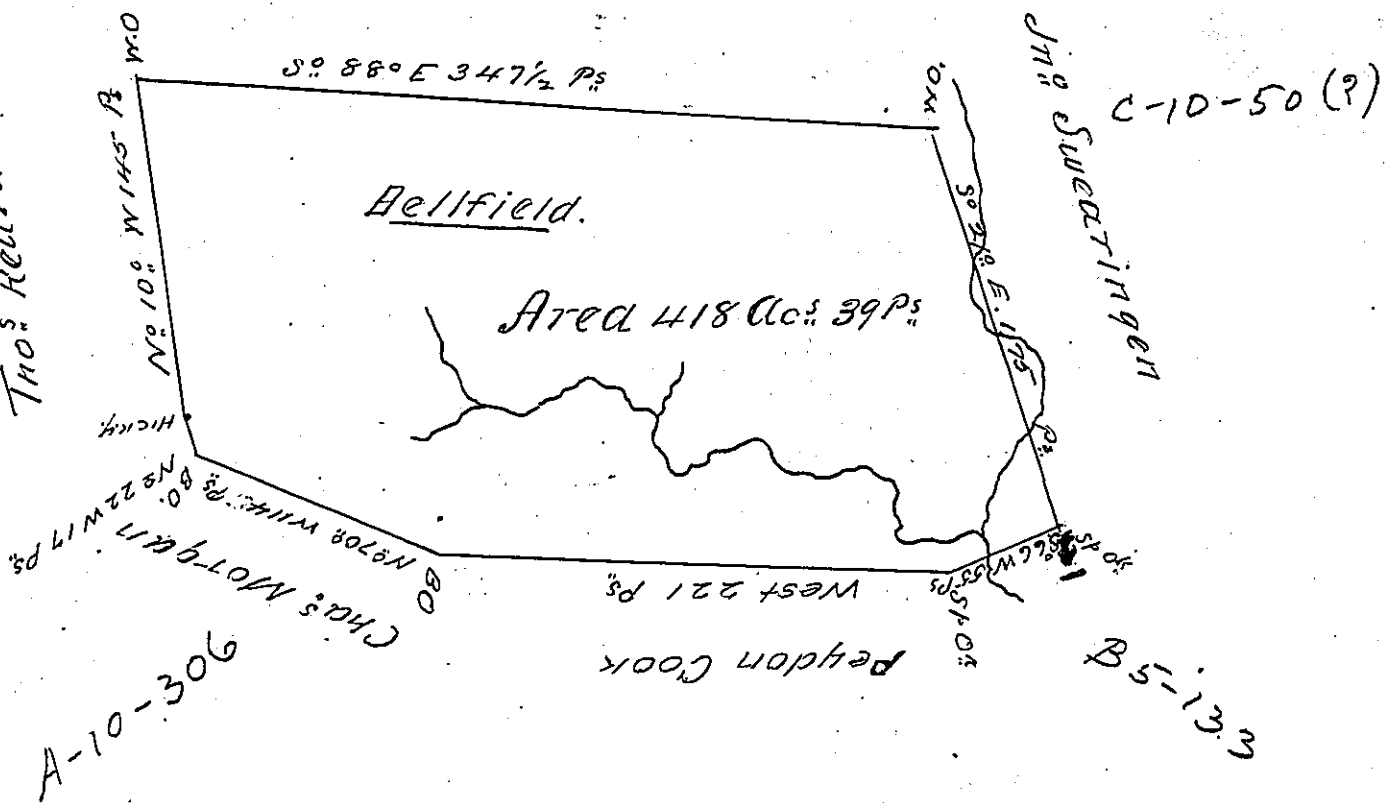


B-7-89

John. Wheeler



A Draught of a Survey called Bellfield. lying on the N<sup>o</sup>  
of Montour Run in Washington County contg 418 Ac.  
39 P:. strict Measure executed Sept. 15<sup>th</sup> 1785 In Consequence  
of a Certif<sup>n</sup> for 400 ac:. granted to Robt. Bell by the Com-  
miss<sup>ns</sup> appointed by Virg<sup>a</sup> to adjust the Titles to unpatented  
Lands in y<sup>e</sup> Counties of Moonga Yohg<sup>a</sup> & Ohio and duly entered  
with y<sup>e</sup> County Surv<sup>r</sup>. as appears from the authenticated  
List of Entries transmitted from y<sup>e</sup> Surv<sup>r</sup> Gen<sup>l</sup>: Office

Ent<sup>d</sup> 31<sup>st</sup> May 1780

Ret<sup>d</sup> 5<sup>th</sup> July 1786.

Math<sup>o</sup> Ritchie } D Sur  
Presley Nevill }

John Lukens Esq<sup>r</sup> Sur Gen<sup>l</sup>.

IN TESTIMONY that the above is a copy of the original remaining on file in  
the Department of Internal Affairs of Pennsylvania, made  
conformably to an Act of Assembly approved the 16th day of  
February, 1833, I have hereunto set my Hand and caused  
the Seal of said Department to be affixed at Harrisburg,  
this nineteenth day of October 1903

*James D. Brown*  
Secretary of Internal Affairs.